

CERTIFICATE OF LOCATION OF GOVERNMENT CORNER

NORTHEAST Corner of Section 8, Township 108, Range 42, 5TH P.M.

STATE OF MINNESOTA, County of MURRAY

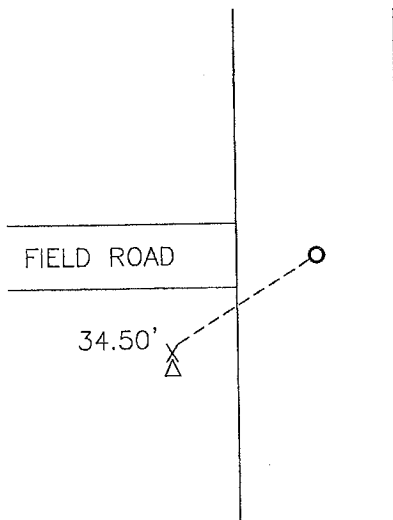
At the corner location shown on the sketch:

On 12-06-2012 found a 1/2" iron.
DATE

left monument as found, lowered monument, removed monument (explain)

On placed a
DATE

SKETCH OF REFERENCE TIES



Minnesota State Plane Coordinate System Murray County Datum NAD83 (1996)

N: 221775.904
E: 464032.095

Nail and seal in pedestal guard post SW 34.50'

Statement of evidence relative to this corner location is on back of page.

I hereby certify that this document and the data contained herein was prepared by me or under my direct supervision.

David Burk 2/22/13
SIGNATURE DATE

Registration No. 43844

- Land Surveyor, Professional Engineer
 County Surveyor, County Engineer

OFFICE OF THE COUNTY RECORDER
County of

I hereby certify that this document was filed in the Co. Recorders office at .M on the MAY 23 2013 day of A.D. 20

County Recorder *James V. Johnson*
By , Deputy

DOCUMENT NO.

Statement of Evidence

In 1861, L. G. W. Fletcher did the original subdivision of the township.

On June 27, 1902, an oak stake was set at the corner. (No name)

On December 6, 2012, Bueltel-Moseng Land Surveying found a $\frac{1}{2}$ " iron at the corner.